



Openspace
12 FTE
77,73 sqm

Cellular office
4 FTE
29,88 sqm

Copy
14,78 sqm

Meeting room
4 seats
11,20 sqm

Reception
2 FTE
38,56 sqm

Kitchen
4,47 sqm

Server
8,95 sqm

Storage
10,21 sqm

Relax room
22,00 sqm

Phone booth Phone booth

Phone booth

Phone booth

Meeting room
16 seats
36,99 sqm

Openspace
18 FTE
82,69 sqm

Cellular office
1 FTE
24,45 sqm

Cellular office
4 FTE
24,45 sqm

Cellular office
4 FTE
24,45 sqm

Openspace
15 FTE
75,60 sqm



CBRE s.r.o., Náměstí Republiky 1,
110 00 Praha 1

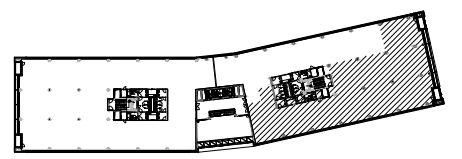
Client:

Spaceplan 4th floor - DRAFT

Total area: 765 sqm
Option: 1
Proposal no.: 1
Date: 04/12/2017
Elaborated by: Marek Požár
marek.pozar@cbre.com

Note: This spaceplan is based on requirements of aforementioned client and can only be used in preparation of their fit-out.

Scheme



Argo Alpha
Evropská 846/176a, Praha 6, 160 00

Areas & material legend

- OPEN OFFICES
Total area: 236,02 sqm
- CELLULAR OFFICES
Total area: 103,27 sqm
- MEETING ROOMS
Total area: 75,67 sqm
- RECEPTIONS
Total area: 38,56 sqm
- KITCHEN & RELAX
Total area: 26,47 sqm
- OTHER
Total area: 33,93 sqm
- CORRIDORS & SANITARY
- Existing construction
- New plaster board partitions
- New glass partitions

