

Cellular office  
1 FTE  
25,84 sqm

Cellular office  
1 FTE  
22,86 sqm

Cellular office  
3 FTE  
22,49 sqm

Cellular office  
3 FTE  
27,33 sqm

Meeting room  
12 seats  
26,00 sqm

Server 3,10 sqm  
Storage 5,50 sqm

Kitchen  
4,48 sqm



CBRE s.r.o., Náměstí Republiky 1,  
110 00 Praha 1

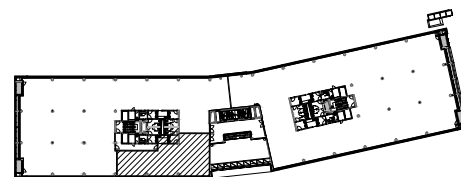
Client:

**Spaceplan 2nd floor - DRAFT**

Total area: 216 sqm  
Option: 1  
Proposal no.: 1  
Date: 04/12/2017  
Elaborated by: Marek Požár  
marek.pozar@cbre.com

Note: This spaceplan is based on requirements of aforementioned client and can only be used in preparation of their fit-out.

**Scheme**



Argo Alpha  
Evropská 846/176a, Praha 6, 160 00

**Areas & material legend**

- CELLULAR OFFICES  
Total area: 98,52 sqm
- MEETING ROOMS  
Total area: 26,00 sqm
- CORRIDORS & SANITARY
- KITCHENS & RELAX  
Total area: 4,48 sqm
- OTHER  
Total area: 8,60 sqm
- Existing construction
- New plaster board partitions
- New glass partitions

